

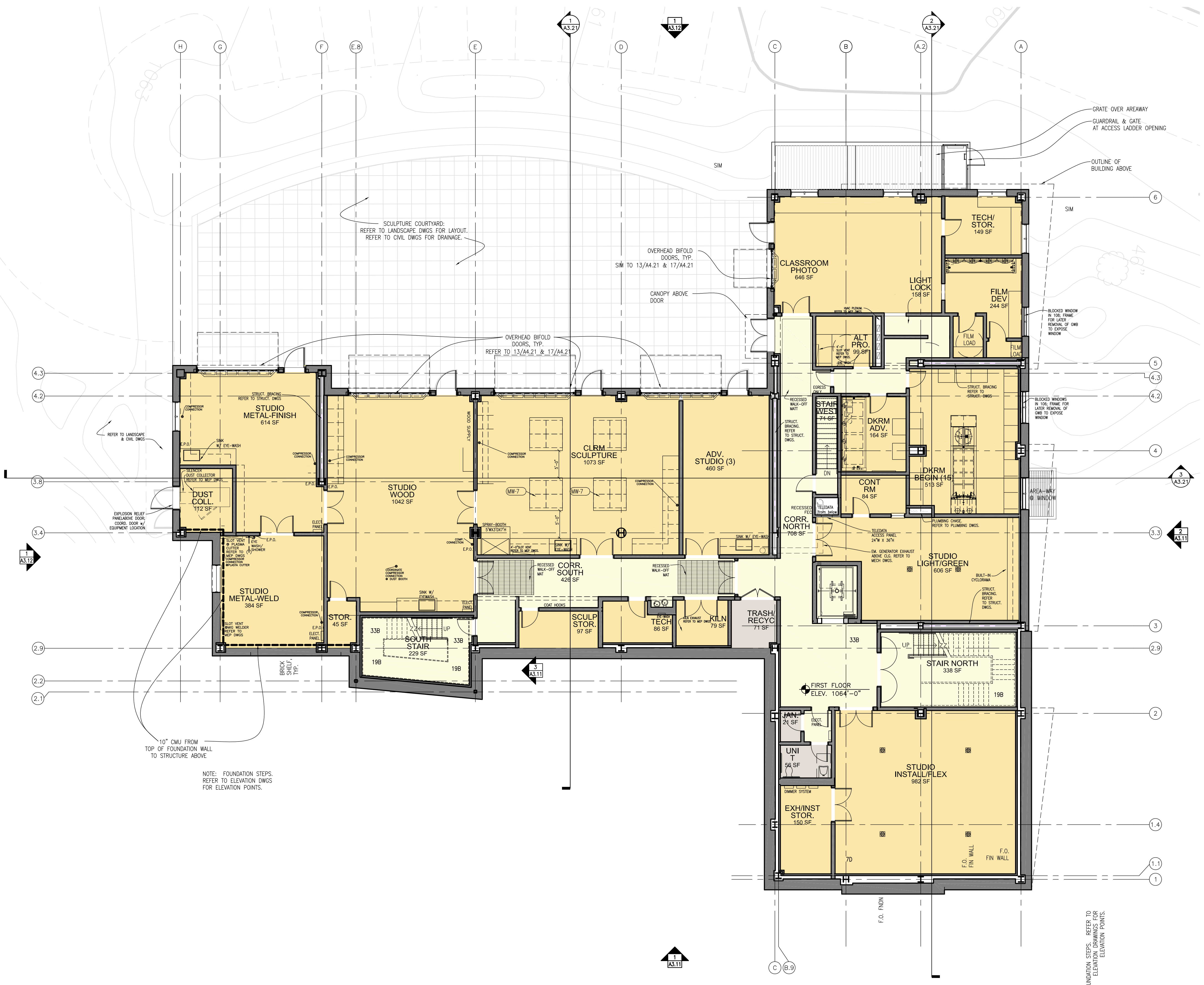
GENERAL NOTES, FLOOR PLANS

1. AT CMU COLUMN ENCLOSURES, USE 4" CMU (PARTITION TYPE 34), DETAIL SIM TO 1/A4.23 SIM. AT GMB COLUMN ENCLOSURES, USE 2 1/2" LT GA STL STUDS (PARTITION TYP 19), DETAIL SIM TO 7/A4.23.
2. FACE OF WALL AT COLUMN ENCLOSURES 12" FROM THE COLUMN LINE UN.D.
3. REFER TO A9.11 MILLWORK SCHEDULE & DETAILS.
4. MEP EQUIPMENT INDICATED FOR REFERENCE ONLY. REFER TO MEP/FP DRAWINGS.
5. REFER TO LANDSCAPE & CIVIL DRAWINGS FOR SITE INFORMATION.
6. NOMINAL DIMENSIONS OF MASONRY OPENINGS ARE SHOWN ON PLANS. ACTUAL DIMENSIONS OF MASONRY OPENINGS SHOWN ON WINDOW SCHEDULE A4.31.
7. ■ RECESSED FLOOR POWER RECEPTACLES.

KENYON COLLEGE

Studio Art Building

GENERAL NOTES:



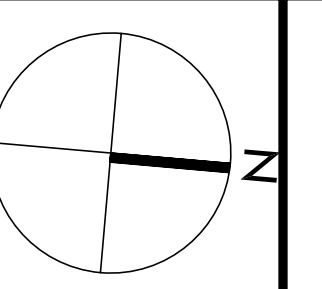
1 FIRST FLOOR PLAN  
1/8" = 1'-0"

© GUND PARTNERSHIP INC.



GUND PARTNERSHIP  
ARCHITECTURE | PLANNING  
47 THORNDIKE STREET  
CAMBRIDGE, MA 02141  
617 | 250 6800  
617 | 577 9614 FAX

CONSULTANT:



REVISIONS:

DATE:	21 MAY 2008
SCALE:	AS NOTED
DRAWN BY:	YJC
CHECKED BY:	BC/DZ
SHEET TITLE:	FIRST FLOOR PLAN
SHEET NUMBER:	20601.02

A2.12